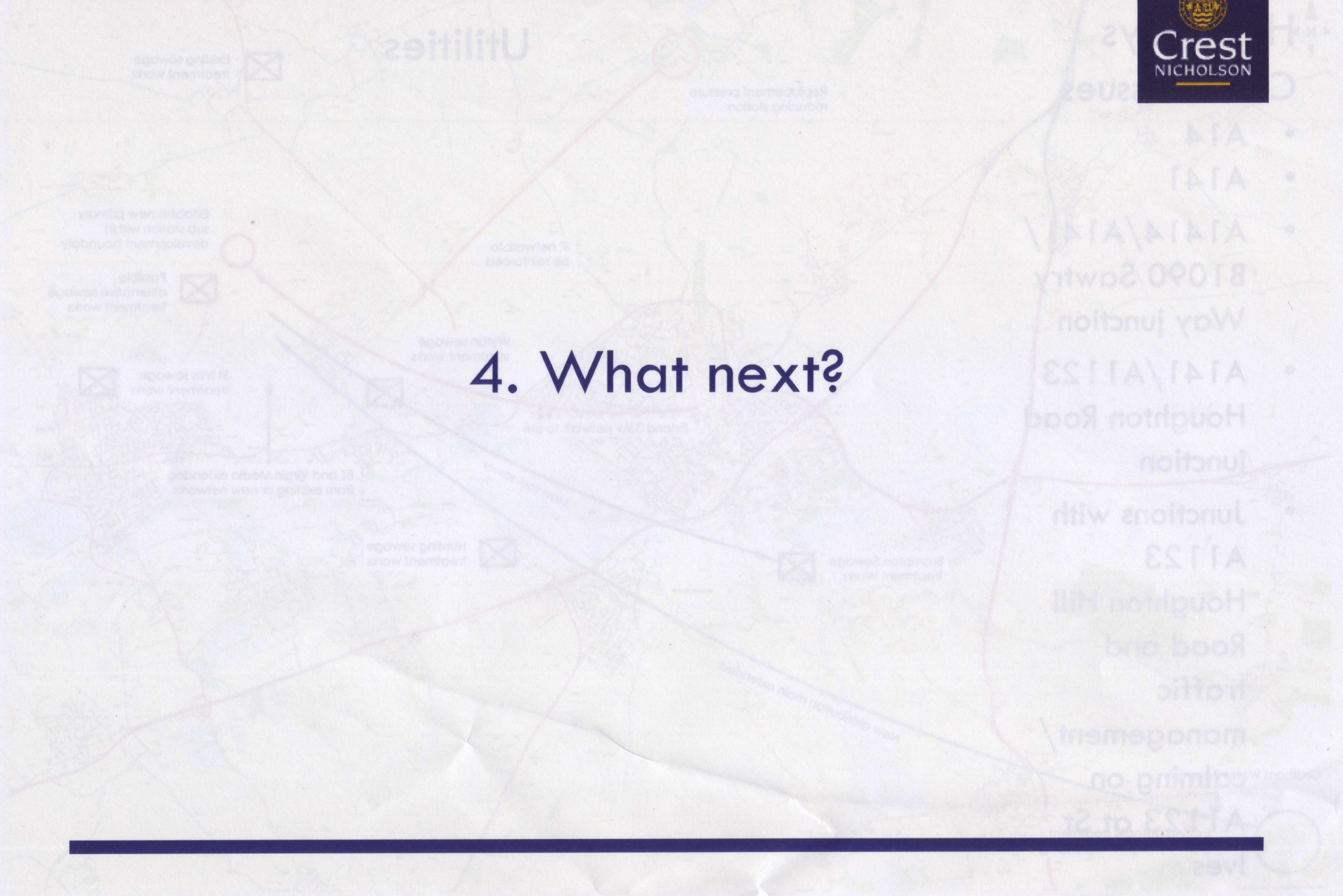


# 4. What next?



## Planning Programme – Local Plan Programme

---



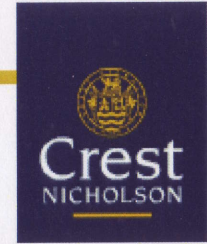
- Stakeholder consultation (January – March 2015)
- Consultation on Proposed-submission version of Local Plan (Summer 2015)
- Submission (Autumn 2015)
- Examination in Public (Spring 2016..?)
- Inspector's Report (Summer 2016..?)
- Adoption (Autumn 2016..?)

## Planning Programme – Target Project Programme


---



- Baseline work (January – March 2015 and beyond)
- Key stakeholder consultation and engagement (Spring /Summer 2015)
- Preliminary public consultation (Summer 2015)
- Scheme evolution ( Summer 2015 - Winter 2015)
- Planning application targeted for submission (Winter 2015 / 2016)
- Development starts – On site Infrastructure ( Spring 2017)
- First Occupations (Autumn 2018)



Thank you.  
Any questions?

A thick, dark blue horizontal bar is located at the bottom of the page.